

LEGACY FALLS LOT 2

SEC KARCHER & SOUTH FLORIDA AVENUE

- SIZE** ±0.45 Acres
- LIST PRICE** \$310,000 (\$15.81 / sq. ft.)
- PARCEL** 32822101 0
- LOCATION** South east quadrant of S. Florida Ave & Karcher Roads
- COMMENTS**
- Situated along the key east-west corridor in the Nampa / Caldwell area.
 - High-growth sub-market with multiple grocery stores coming into the area.
 - Population within a 5-mile radius is expected to add over 12,000 new residences in the next five years.

CONTACT FOR MORE INFORMATION

Tyler Johnson
tjohnson@landadvisors.com
208.866.3579

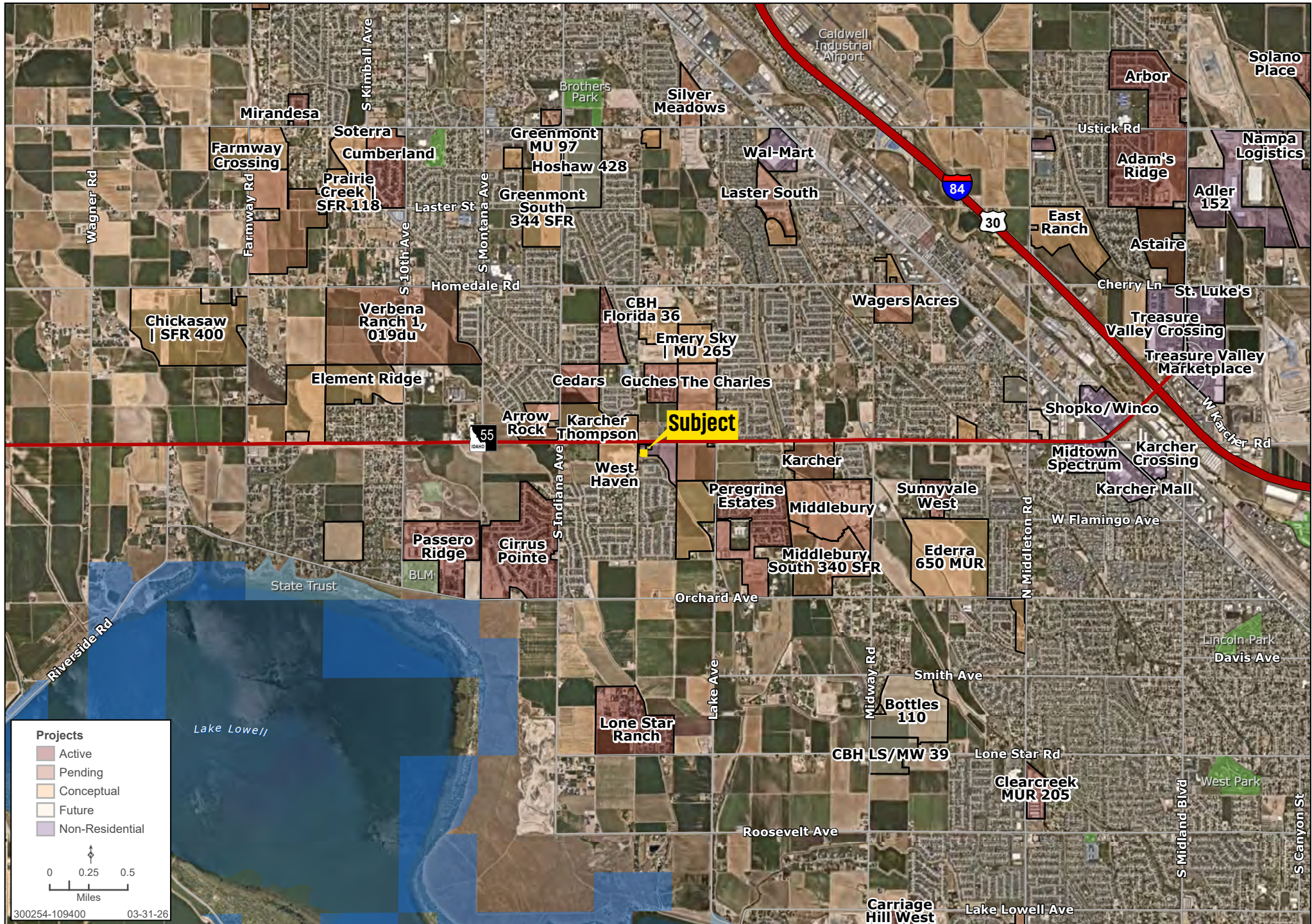
3597 E Monarch Sky Lane, Suite 360,
Meridian, ID 83646

 Land Advisors[®]
ORGANIZATION

LandAdvisors.com

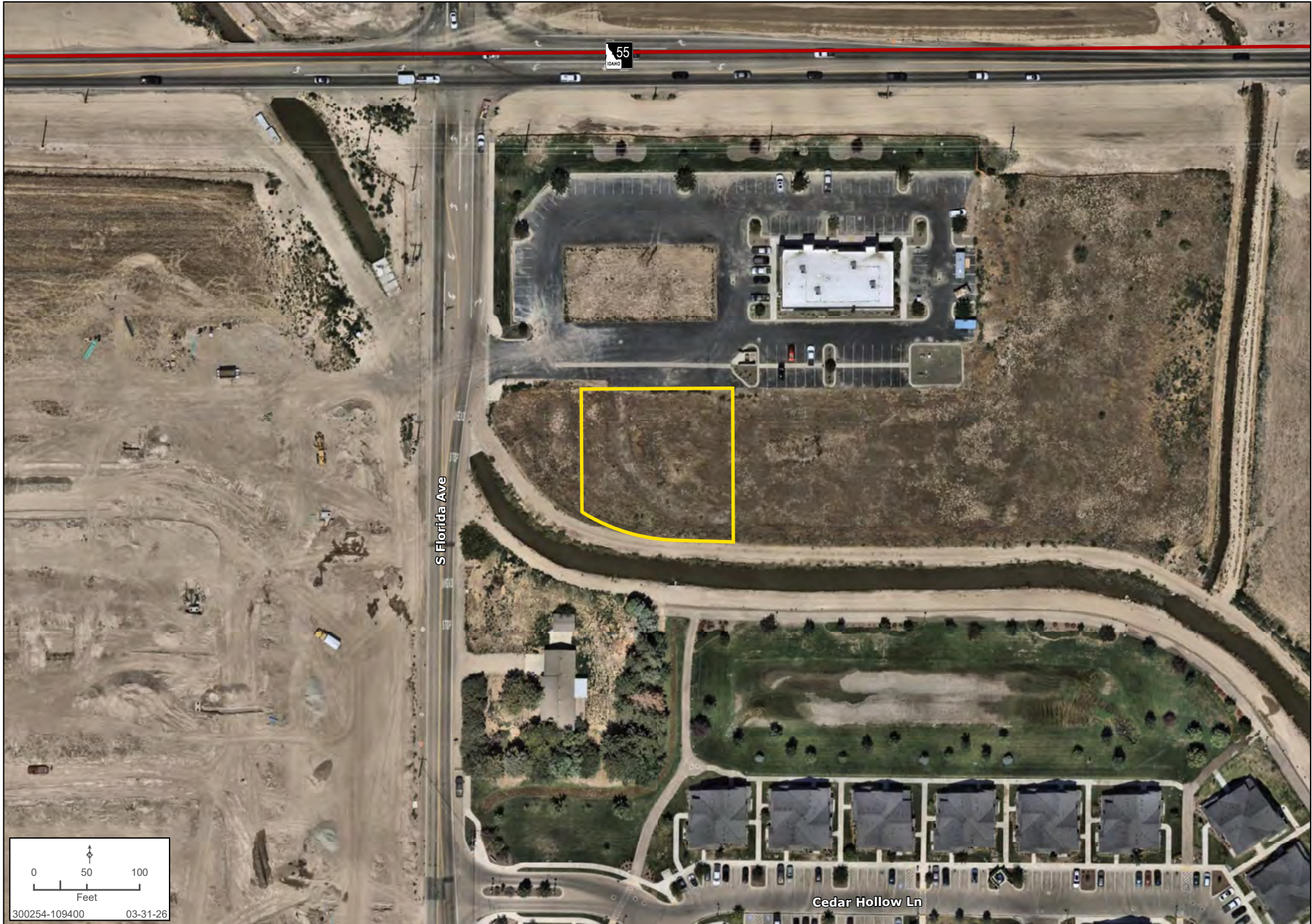
AREA

Tyler Johnson | 208.866.3579 | landadvisors.com



DETAIL

Tyler Johnson | 208.866.3579 | landadvisors.com



AERIAL VIEW

Tyler Johnson | 208.866.3579 | landadvisors.com



300254-109400 03-31-26

AERIAL VIEW

Tyler Johnson | 208.866.3579 | landadvisors.com




300254-109400 03-31-26

AERIAL VIEW

Tyler Johnson | 208.866.3579 | landadvisors.com



300254-109400 03-31-26

The information in this document and any attachments regarding any property has been obtained from sources believed reliable, but we have not verified it and we make no guarantee, warranty, or representation as to its accuracy or completeness, and we do not undertake to update or correct any of the information presented. Any projections, opinions, assumptions, or estimates ("forward-looking statements") used are, for example, only and do not represent the current or future performance of the property and actual results may differ materially from such forward-looking statement due to, without limitation, changes in: (i) the market, (ii) governmental legal, regulatory or permitted use changes, and (iii) other factors. You and your advisors should conduct a careful, independent investigation of the property to determine to your satisfaction the property's suitability for your needs. Any reliance on this information is at your own risk and is subject to change, prior sale or complete withdrawal. IDCanyon300254.



[LandAdvisors.com](https://www.LandAdvisors.com)