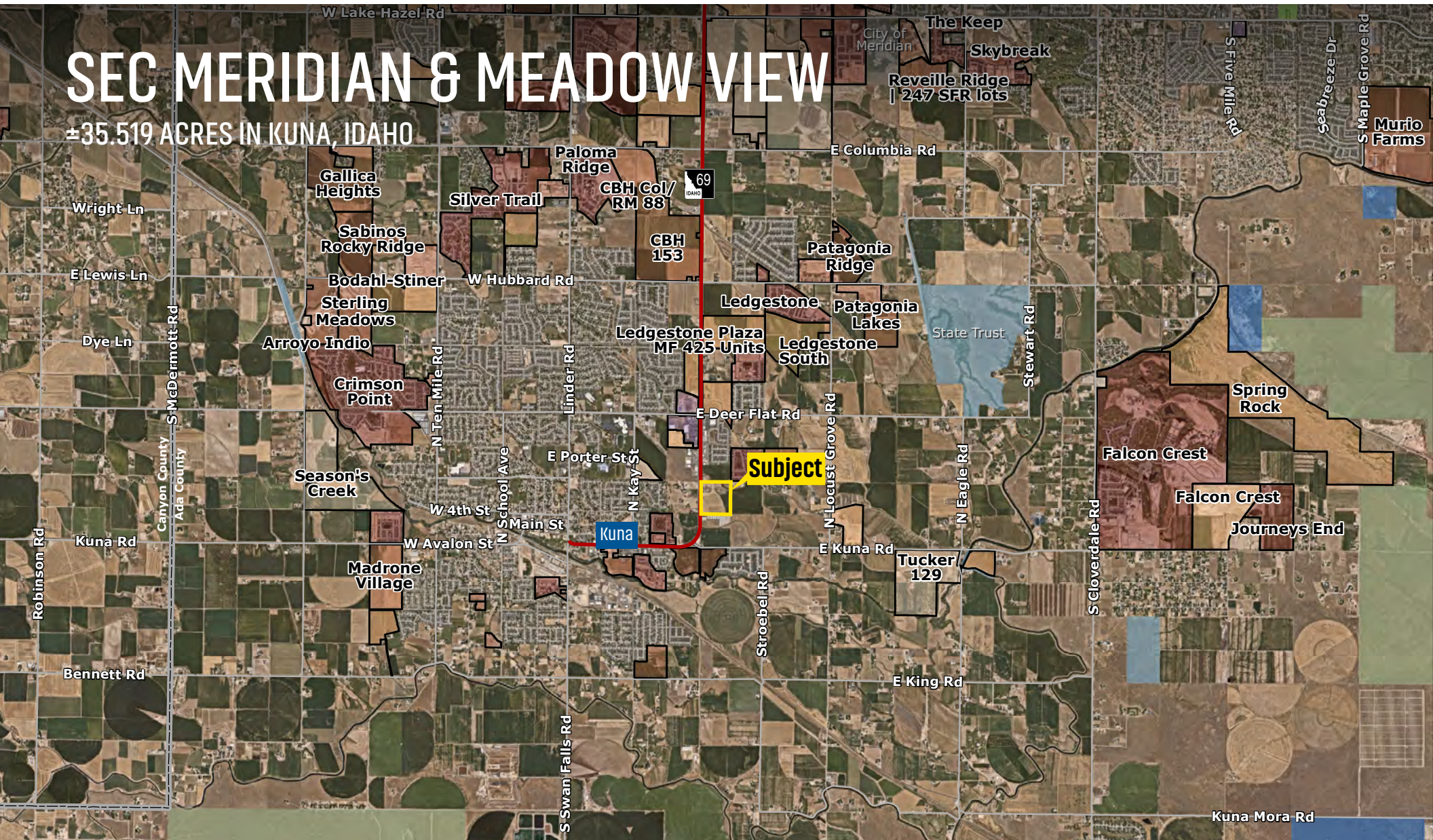


SEC MERIDIAN & MEADOW VIEW

±35.519 ACRES IN KUNA, IDAHO



CONTACT FOR MORE INFORMATION





Tyler Johnson
tjohnson@landadvisors.com
208.866.3579


 Land Advisors[®]
ORGANIZATION

208.366.8700 | LandAdvisors.com

EXECUTIVE SUMMARY



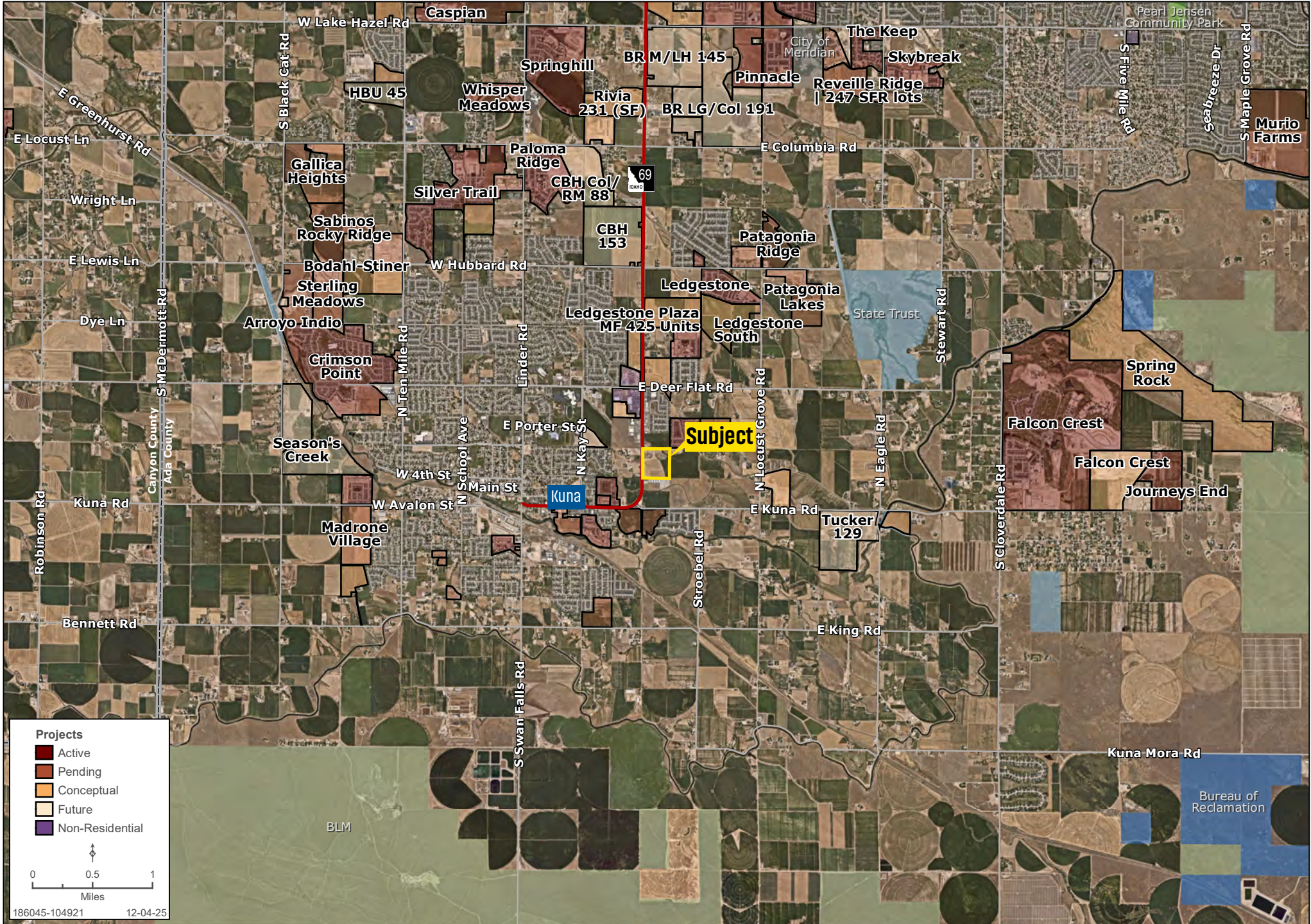
 LOCATION	SEC Meridian Road & Meadow View Road
 PRICE	\$11,600,000
 SIZE	±35.519 Acres
 PARCELS	S1419325400

 ZONING	Zoned C-2 Community Commercial.
 COMMENTS	<ul style="list-style-type: none"> • Large-scale commercial opportunity in one of the Treasure Valley's fastest-growing submarkets. • Positioned in Kuna's path of growth. • This property is ideally suited for a variety of employment and retail uses. • Located in an area of rapidly expanding residential growth. • ±20.147 Acres to the East of this property is also available.



AREA

Tyler Johnson | 208.866.3579 | landadvisors.com



DRONE PHOTO



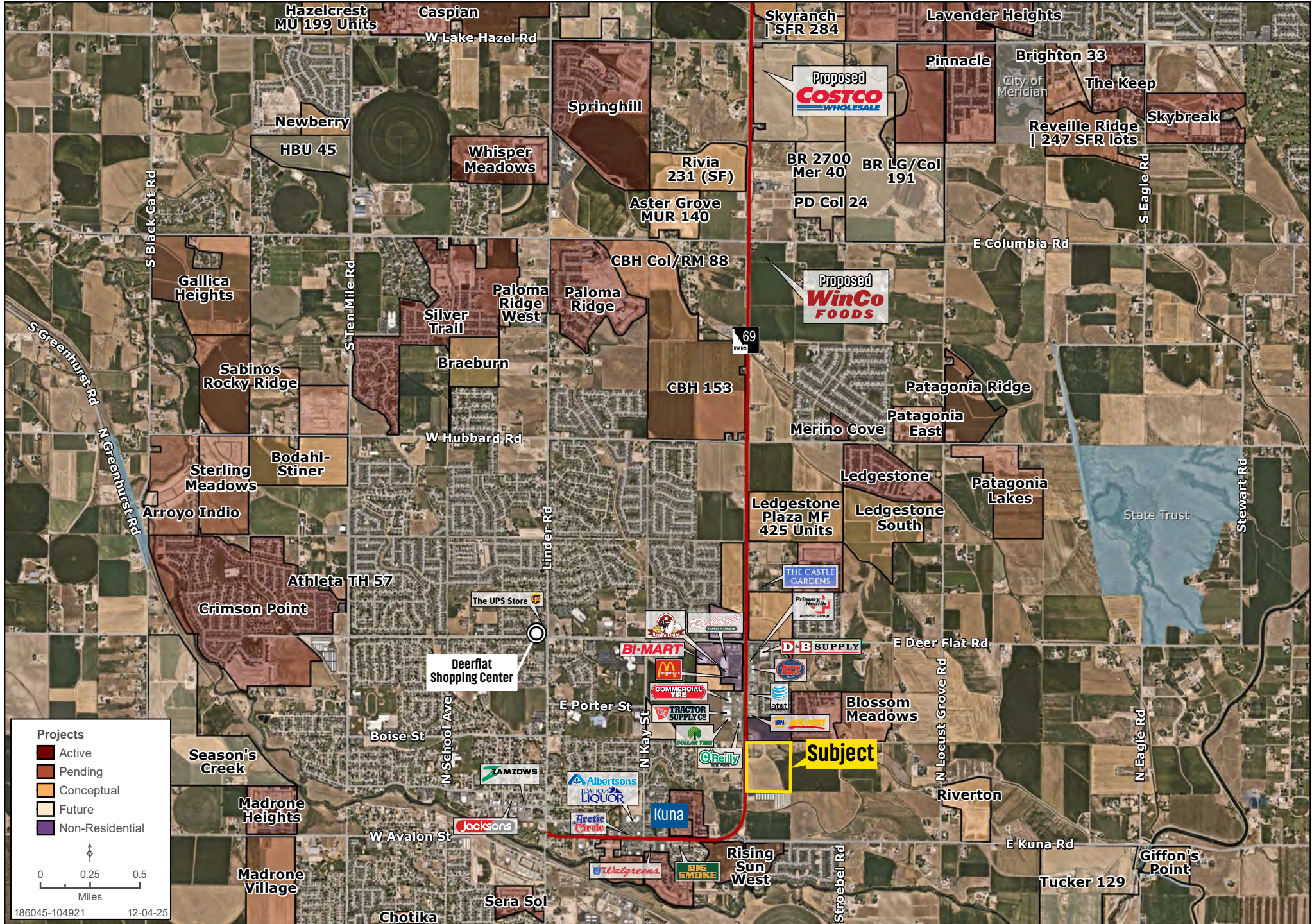
Subject

DRONE PHOTO



MARKET

Tyler Johnson | 208.866.3579 | landadvisors.com

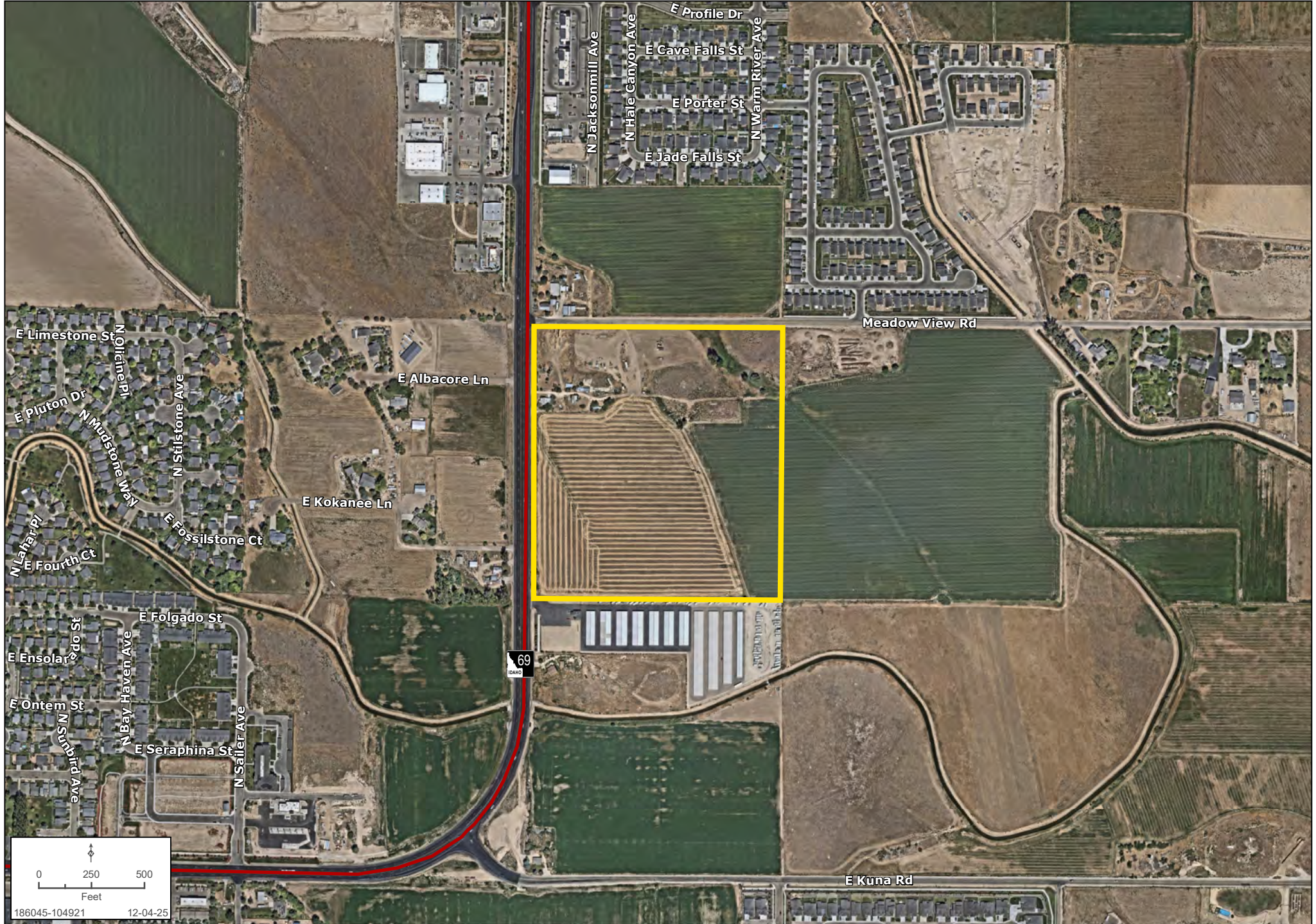


DRONE PHOTO



DETAIL

Tyler Johnson | 208.866.3579 | landadvisors.com



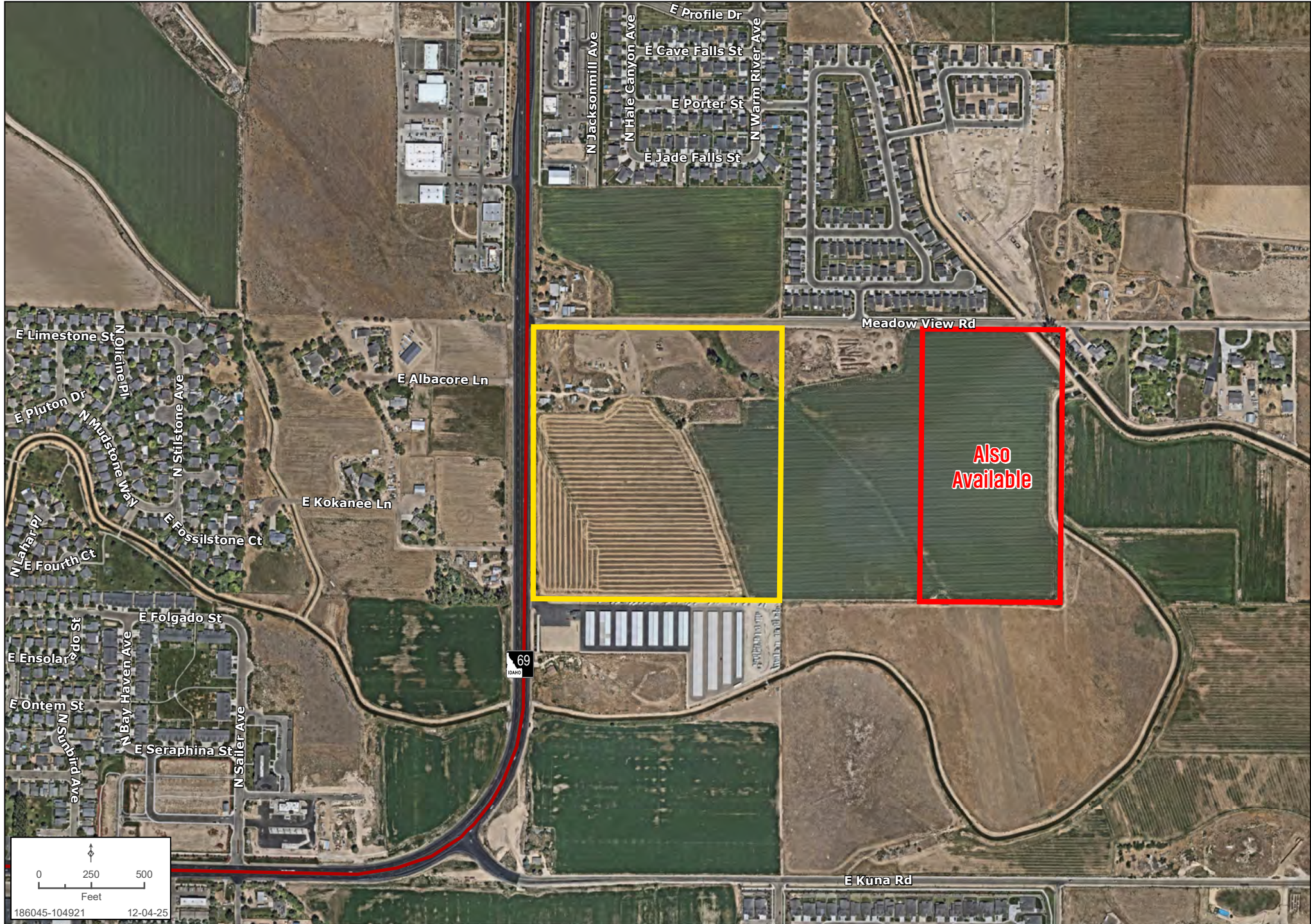
0 250 500
Feet
186045-104921 12-04-25

DRONE PHOTO



ALSO AVAILABLE

Tyler Johnson | 208.866.3579 | landadvisors.com



Tyler Johnson
tjohnson@landadvisors.com
208.866.3579



3597 E Monarch Sky Lane, Ste 360, Meridian, ID 83646 | 208.366.8700 | LandAdvisors.com

The information in this document and any attachments regarding any property has been obtained from sources believed reliable, but we have not verified it and we make no guarantee, warranty, or representation as to its accuracy or completeness, and we do not undertake to update or correct any of the information presented. Any projections, opinions, assumptions, or estimates ("forward-looking statements") used are, for example, only and do not represent the current or future performance of the property and actual results may differ materially from such forward-looking statement due to, without limitation, changes in: (i) the market, (ii) governmental legal, regulatory or permitted use changes, and (iii) other factors. You and your advisors should conduct a careful, independent investigation of the property to determine to your satisfaction the property's suitability for your needs. Any reliance on this information is at your own risk and is subject to change, prior sale or complete withdrawal. IDAd3186045 - 03.24.2026.