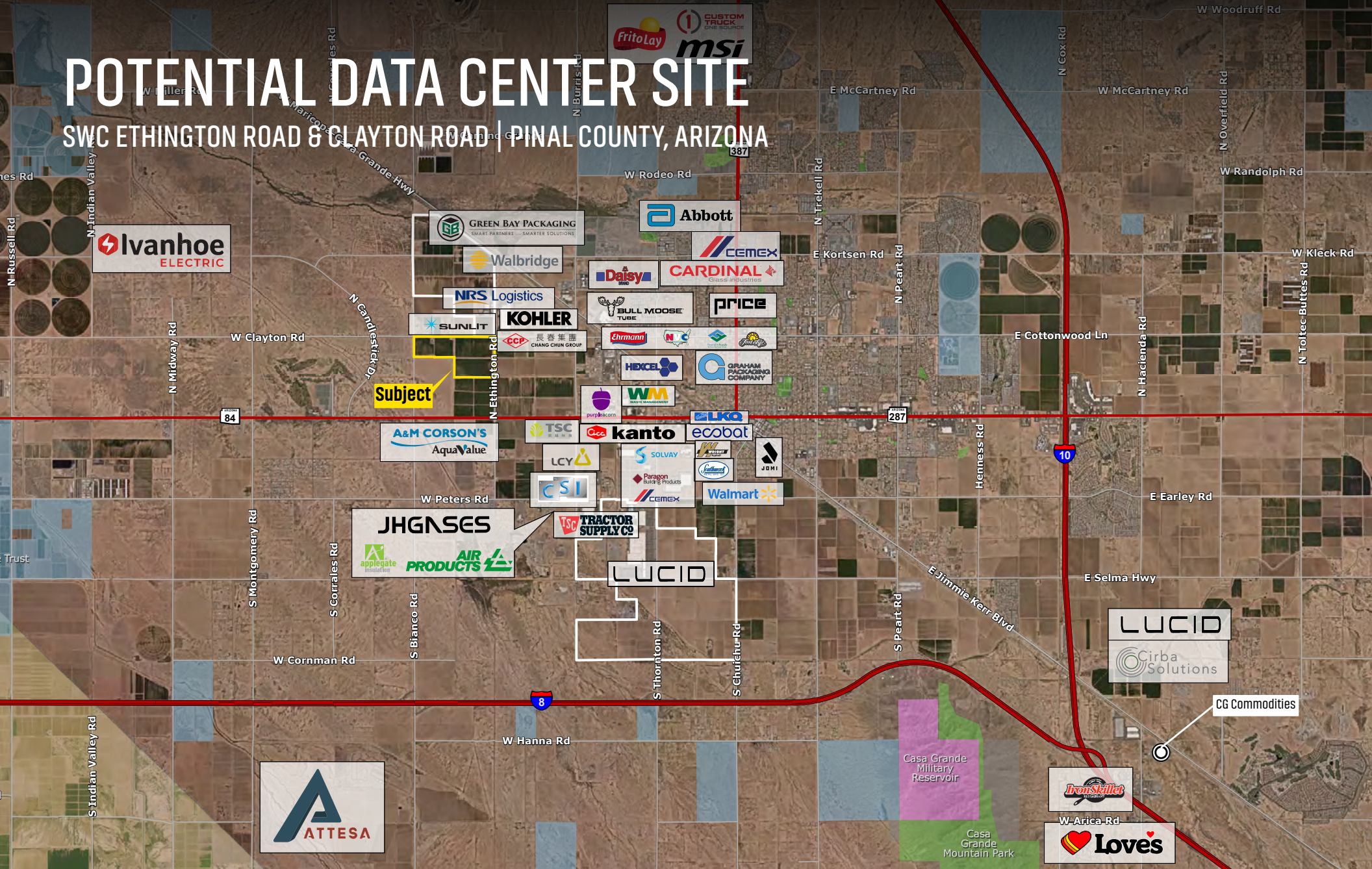


POTENTIAL DATA CENTER SITE

SWC ETHINGTON ROAD & CLAYTON ROAD | PINAL COUNTY, ARIZONA



CONTACT FOR MORE INFORMATION

Kirk P. McCarville, CCIM
 kmccarville@landadvisors.com
 520.251.0348

Trey Davis
 tdavis@landadvisors.com
 602.363.3901

 Land Advisors[®]
 ORGANIZATION

520.251.0348 | LandAdvisors.com

EXECUTIVE SUMMARY



LOCATION The Property is located at the southwest corner of Ethington Road & Clayton Road in Pinal County, Arizona

PRICE Submit

SIZE ±240 Acres

PARCELS 503-44-001A, 503-44-001B, 503-44-002, 503-44-003

TAXES \$22,979.86 (2024)

UTILITIES Water - Arizona Water Company Sewer - City of Casa Grande
Electric - Arizona Public Service (APS) Gas - Southwest Gas

DRIVE TIME

CITY	DRIVE TIME	DISTANCE
Phoenix	50 Minutes	50 Miles
Tucson	1 Hour 10 Minutes	70 Miles
San Diego	5 Hours	340 Miles
Los Angeles	6 Hours	425 Miles
Las Vegas	5 Hours 30 Minutes	350 Miles
Denver	13 Hours	900 Miles
Albuquerque	7 Hours 10 Minutes	420 Miles
San Bernadino	5 Hours 20 Minutes	370 Miles

APS EXPANSION PLANS Immediately south of the subject property is the proposed APS TS24 Substation and preliminary TS24 Sitting Area.

TS24 Transmission Lines Siting Project:

- The purpose of the TS24 Transmission Lines Siting Project (Project) is to expand transmission infrastructure in the Casa Grande area to support growth in the region, including recent increases in large customers.
- The Project includes new 500kV, 230kV and 69kV transmission lines interconnecting the future TS24 Substation to existing substations and transmission lines in Casa Grande and unincorporated Pinal County, Arizona.
- The Project will require siting and permitting through the Arizona Corporation Commission.

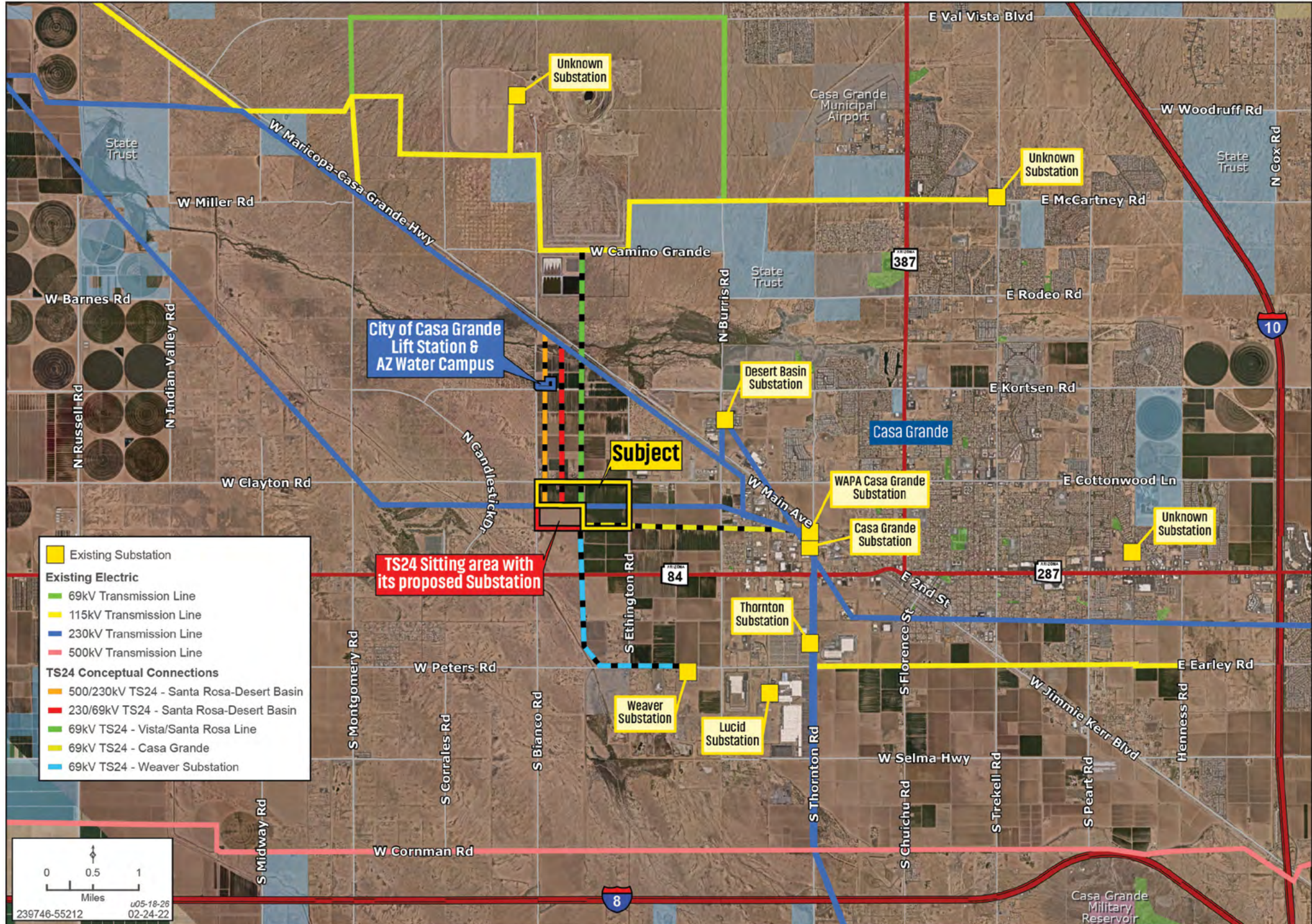
[Click here to view the full document.](#)



- 1. TS24 – Santa Rosa/Desert Basin 500/230kV Line** – A new, approximately 2-3-mile-long, double-circuit 500/230kV line between the future TS24 Substation and the existing Santa Rosa to Desert Basin 230kV line, with one 230kV circuit toward Santa Rosa Substation and one 500kV circuit for future consideration.
- 2. TS24 – Santa Rosa/Desert Basin Line 230/69kV Line** – A new, approximately 2-3-mile-long, double-circuit 230/69kV line between the future TS24 Substation and the existing Santa Rosa to Desert Basin 230kV line.
- 3. TS24 – Vista/Santa Rosa 69kV Line** – A new, approximately 3-mile-long, double-circuit 69kV line between the future TS24 Substation and the existing Vista – Santa Rosa 69kV line.
- 4. TS24 – Casa Grande 69kV Line** – A new, approximately 3-mile-long single-circuit (double-circuit capable) 69kV line between the future TS24 Substation and the existing Casa Grande Substation.
- 5. TS24 – Weaver Substation** – A new, approximately 4-mile-long single-circuit (double-circuit capable) 230/69kV line between the future TS24 Substation and the existing Weaver Substation.

APS CONCEPTUAL CONNECTIONS

Kirk P. McCarville, CCIM | Trey Davis | 520.251.0348 | landadvisors.com



	Existing Substation
Existing Electric	
	69kV Transmission Line
	115kV Transmission Line
	230kV Transmission Line
	500kV Transmission Line
TS24 Conceptual Connections	
	500/230kV TS24 - Santa Rosa-Desert Basin
	230/69kV TS24 - Santa Rosa-Desert Basin
	69kV TS24 - Vista/Santa Rosa Line
	69kV TS24 - Casa Grande
	69kV TS24 - Weaver Substation

0 0.5 1
Miles

u05-18-26
02-24-22

239746-55212

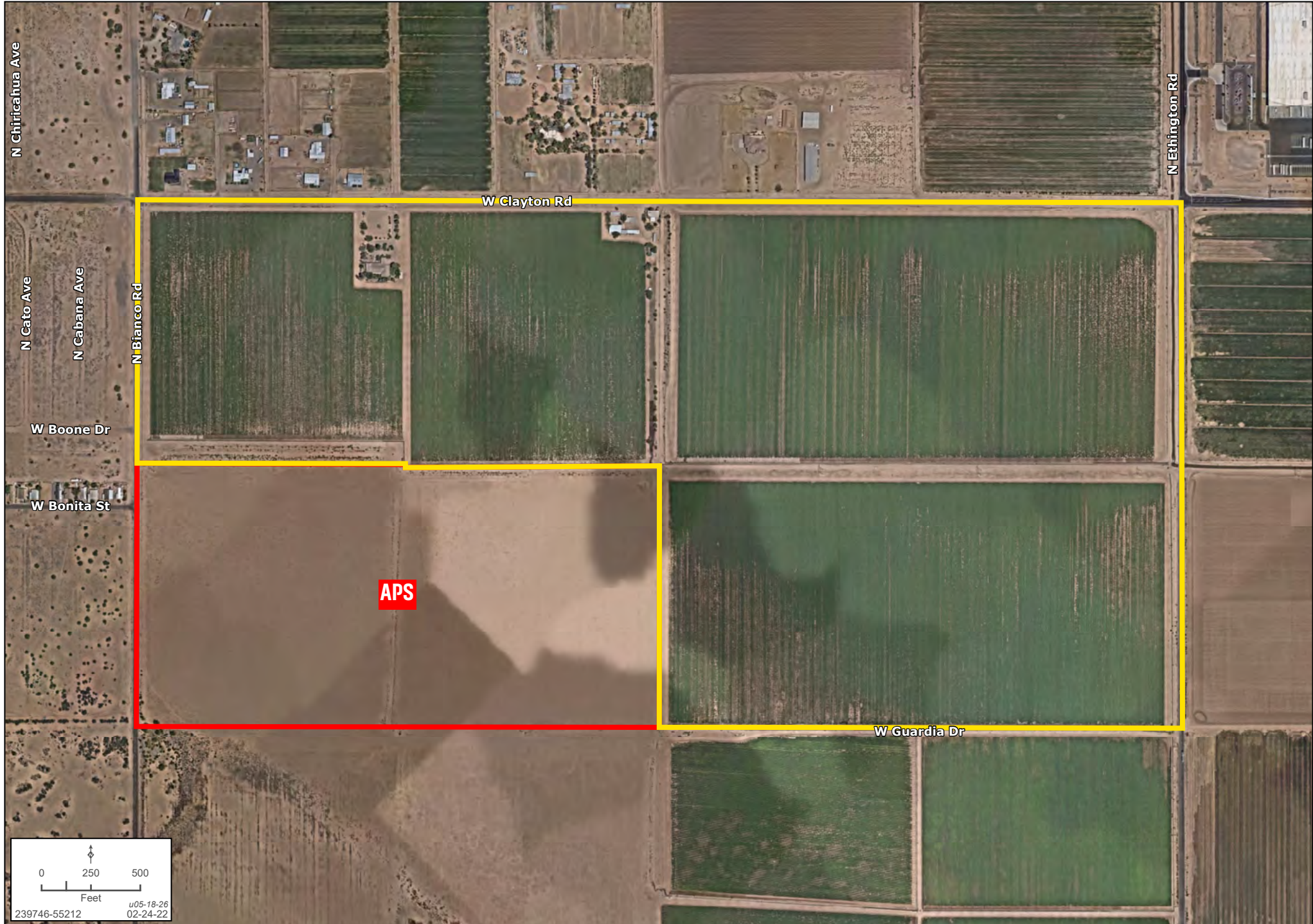
CORPORATE NEIGHBORS

Kirk P. McCarville, CCIM | 520.251.0348 | Trey Davis | 602.363.3901 | landadvisors.com



DETAIL

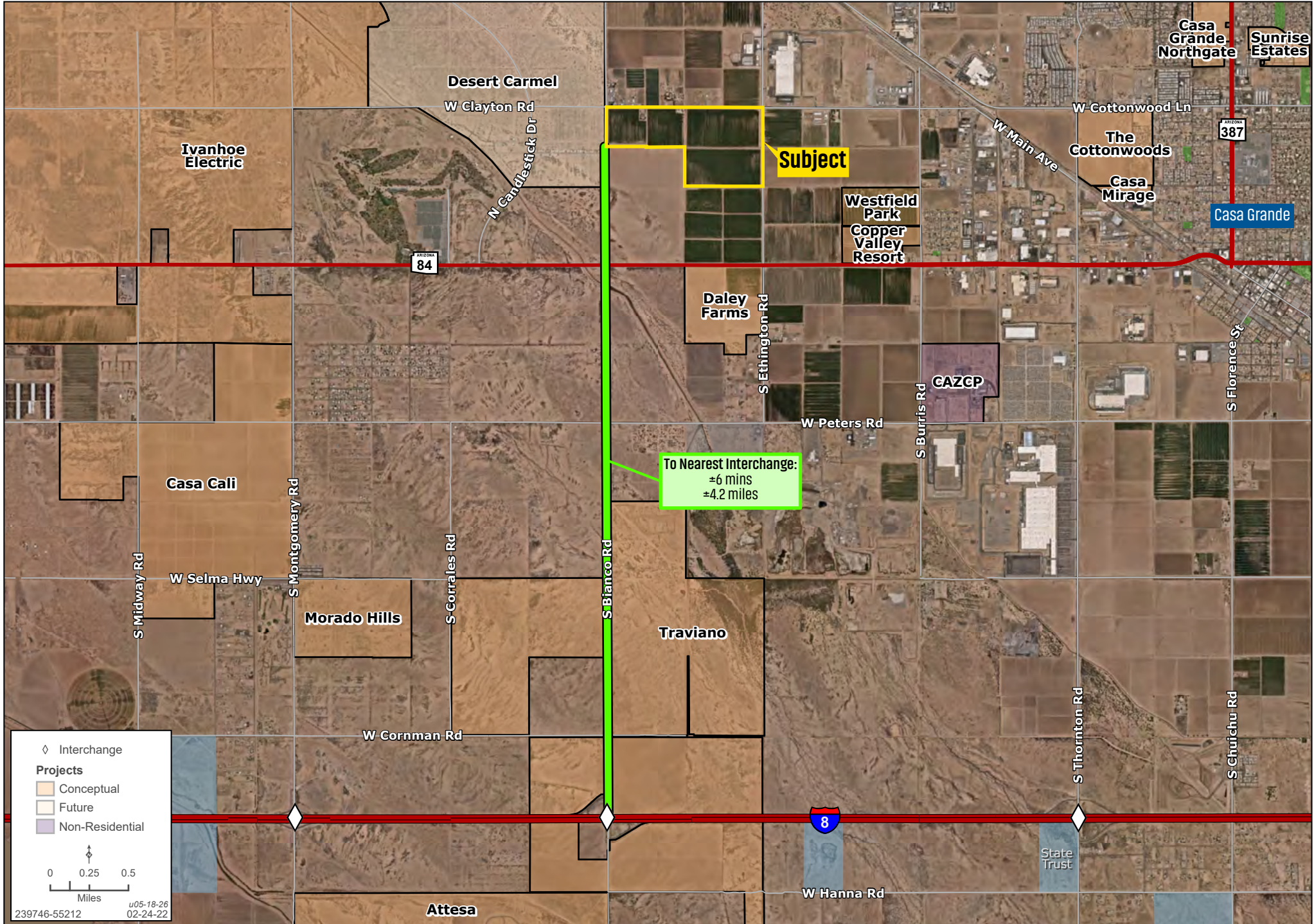
Kirk P. McCarville, CCIM | Trey Davis | 520.251.0348 | landadvisors.com



0 250 500
Feet
u05-18-26
02-24-22
239746-55212

DISTANCE TO INTERCHANGE

Kirk P. McCarville, CCIM | 520.251.0348 | Trey Davis | 602.363.3901 | landadvisors.com



The information in this document and any attachments regarding any property has been obtained from sources believed reliable, but we have not verified it and we make no guarantee, warranty, or representation as to its accuracy or completeness, and we do not undertake to update or correct any of the information presented. Any projections, opinions, assumptions, or estimates ("forward-looking statements") used are, for example, only and do not represent the current or future performance of the property and actual results may differ materially from such forward-looking statement due to, without limitation, changes in: (i) the market, (ii) governmental legal, regulatory or permitted use changes, and (iii) other factors. You and your advisors should conduct a careful, independent investigation of the property to determine to your satisfaction the property's suitability for your needs. Any reliance on this information is at your own risk and is subject to change, prior sale or complete withdrawal. AZPinal239746 - 05.18.2026.



[LandAdvisors.com](https://www.LandAdvisors.com)